



Instruction

Hot and cold Glass Rinser



HOT

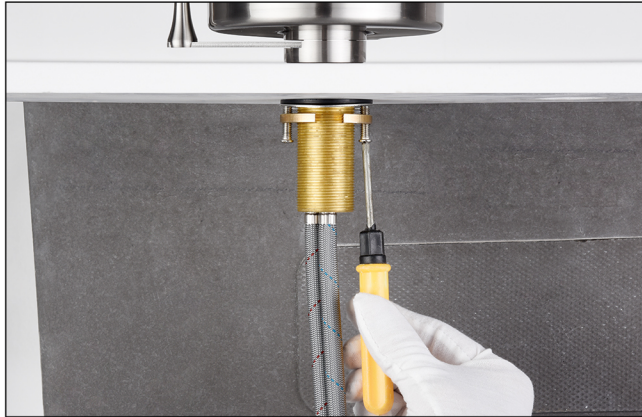


COLD

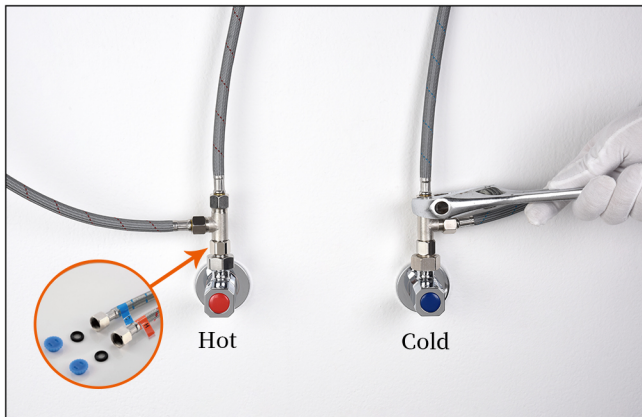




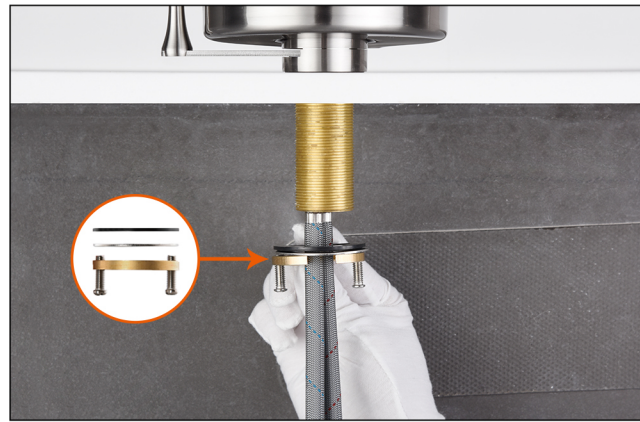
1. Place the glass inser and hoses into the predrilled hole for installation.



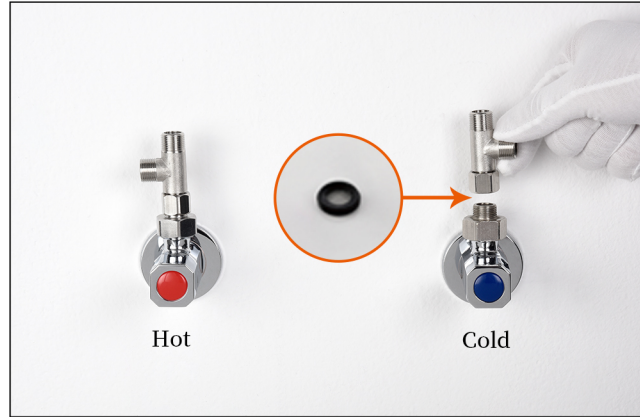
3. Screw the nut counterclock wise up to the underside of the counter top by hand and tighten the screws on the metal nut.



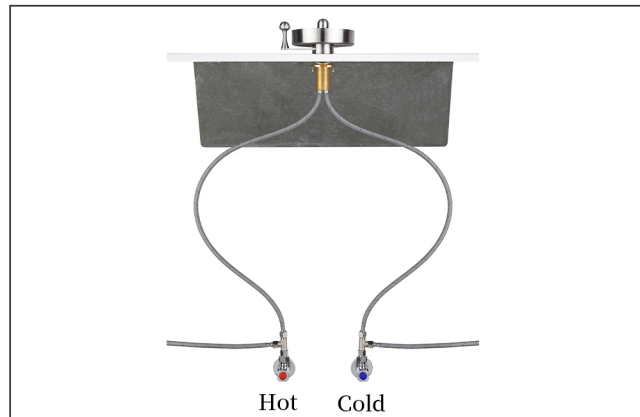
5. Connect the water supply lines to the shut off valves. Make sure the washer is on the brass nut.



2. Put the rubber washer, steel washer, and metal nut with screws in that sequence onto the rinser's shank.



4. Connect the fitting to the shut off valves. Make sure the washer is on the side.



6. The installation of the glass rinser is completed.

TIPS:

- a. Flush the block and the water supply pipes thoroughly before installation.
- b. Clean the surface of the glass rinser regularly.
- c. Avoid sharp objects and acidic detergent to the surface of the glass rinser.

If you have any queries about our products, please feel free to contact us.

You can get our contact details via the warranty card.

Customer Service Team

For the cold&hot supply hoses :

1. The two screens are used for preventing any impurities from entering and damaging the glass rinser.
2. If the water flow becomes restricted, then there may be impurities stuck onto the screen.
3. For the cold&hot supply hoses: Please take the screens out and wash them thoroughly.

