

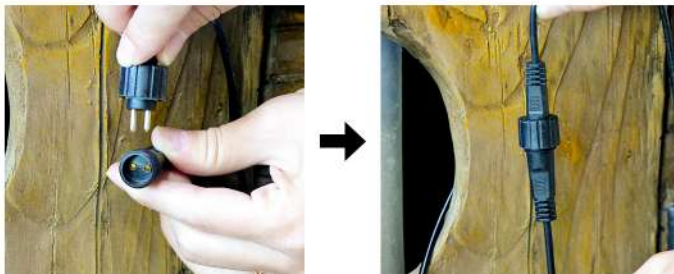
INSTALLATION INSTRUCTION

Step 1



Remove the hose from the hole on the back of the product and connect it to the **pump** as shown. This process may require force. Then adjust the water pump valve to the proper size.

Step 2



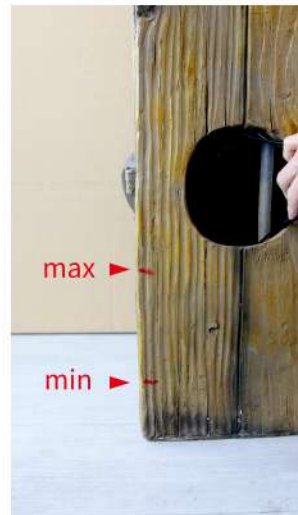
Connect the two-pin plug on the other end of the **adapter** to the wires on the **pump** as shown, then connect the male and female plugs to each other and tighten the plastic cap. (Pay attention to the difference between the **pump** and the **adapter** do not plug the wrong plug)

Step 3



Connect the two-pin plugs on the other end of the **pump** to the **adapter** as shown. Tighten the plastic cover, then place the **pump** and wires back into the holes on the back of the product, leaving only the **adapter** plug. (Pay attention to the difference between the **pump** and the **adapter** do not plug the wrong plug)

Step 4



Pour water into the inside of the product. Note the the water level line in the diagram.

Step 5



Installation is complete.

If you have any questions, please contact customer service!



Adapter



Pump