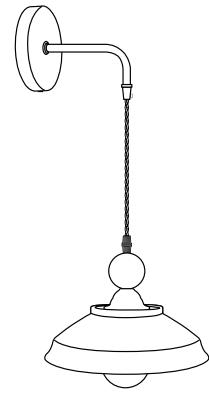
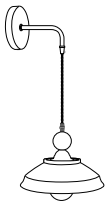


Wall Sconces Fixture Model# JK-WS011



PACKAGE CONTENTS



Light Fixture



Wire Nuts



Screws

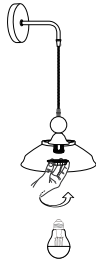


plastic expansion pipes

How to install the Light Fixture

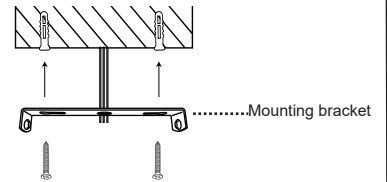
1

Unscrew the lamp housing fastening clasp of the wall sconces fixture, put the lamp housing into the lamp base, and then re-tighten the lampshade fastening clasp (as shown in figure).



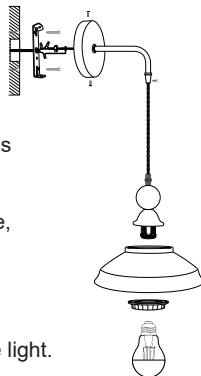
2

Use plastic expansion pipes and screws to secure the bracket to the ceiling.



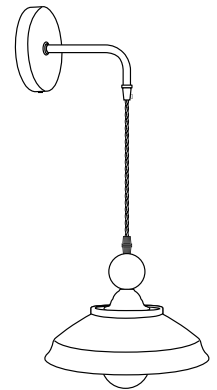
3

Connect the house live wire to the blue wire (L) from the light fixture using a wire connector. Attach the neutral wire from the house to the red wire (N) from the light fixture. Then, attach the ground wire from the house to the yellow wire from the light fixture the same way. Wrap all wire connections with electrical tape for a more secure connection. Carefully tuck all wire connections into the outlet box. Unscrew the fastening clasp on the light fixture, place the lampshade onto the fixture, then rotate the fastening clasp back into place to secure the lampshade. Finally, insert the bulb to complete the installation. After installing the bulb, rotate the switch on the light fixture forward to turn on the light.



4

Please note: this product is a light fixture only; bulbs are not included and must be purchased separately before use.



Maintenance

1. Voltage: 85-265V
2. Don't install it on the moist ceiling.
3. Turn off the power before clean out
4. Please wash with the sanitizer without corrosivity.
5. Please install according to the installation manual.