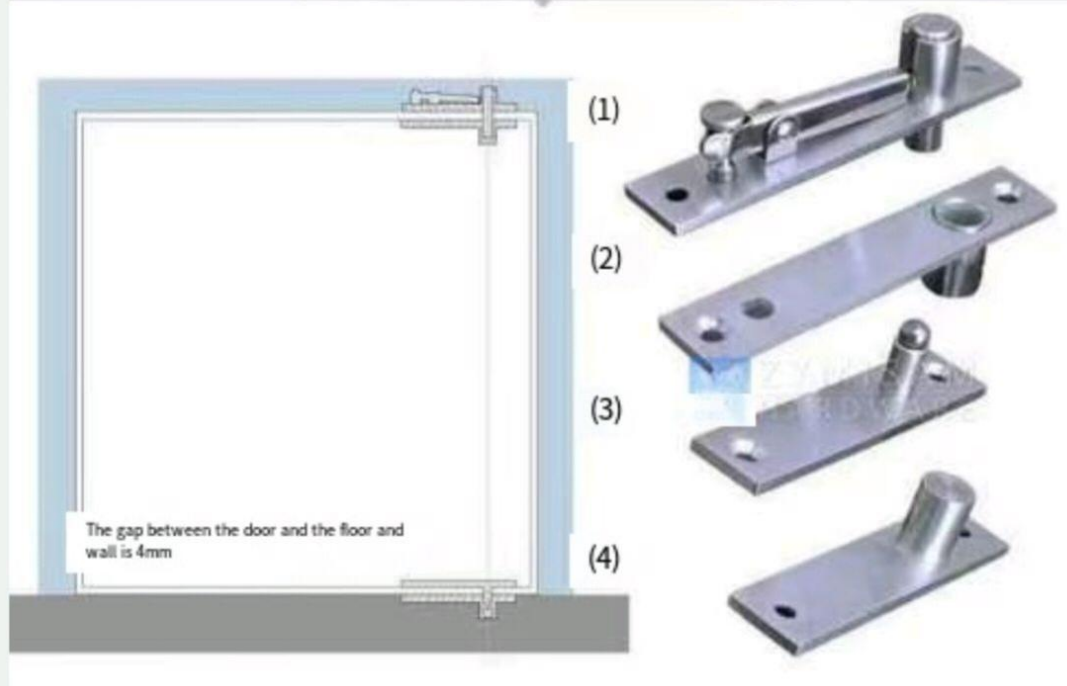


Installation steps /Installation steps



1. Dig out grooves on the corresponding door and door frame according to the product installation drawing.
- 2, the four parts of the product are respectively stuck into the corresponding position, so that the center of the rotating shaft is in the same straight line, after confirmation, the initial fixing screw
3. Adjust the adjusting screw of the part (1) to the lowest place and the stainless steel cylinder to the highest point with a screwdriver. Retract it completely into the inside of the panel
- 4 Place the steel ball inside the round tube of the part (4)**
- 5- Frame the door to the door frame so that the part (3) cylinder is placed into the round tube of the part (4) and the part is made
- The cylinder of (1) corresponds to the round tube of part (2).
- 6- Turn the adjusting screw of part (1) upward so that the cylinder rises into the round tube of part (2)
7. Turn the door shaft back and forth, if it is silent and smooth when rotating, the screw will be further fixed and the installation is completed.
- 8, if the rotating door shaft is not smooth, then fine tune the position of the part (3) or part (4) to make it more smooth.