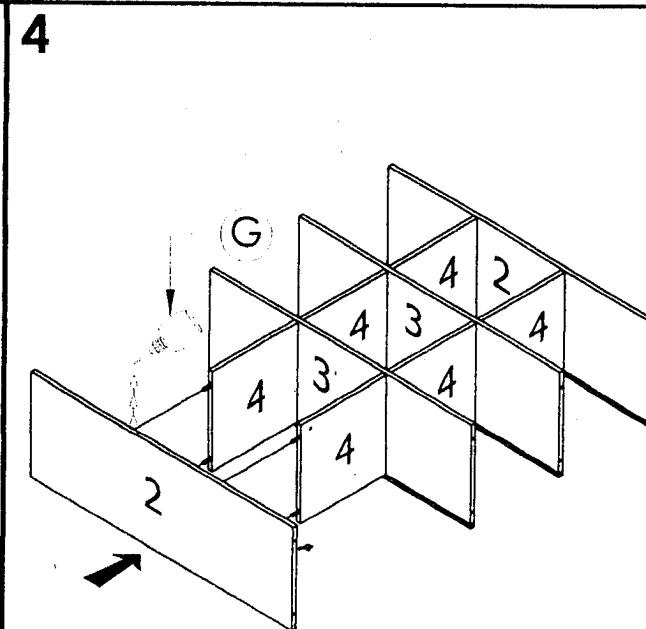
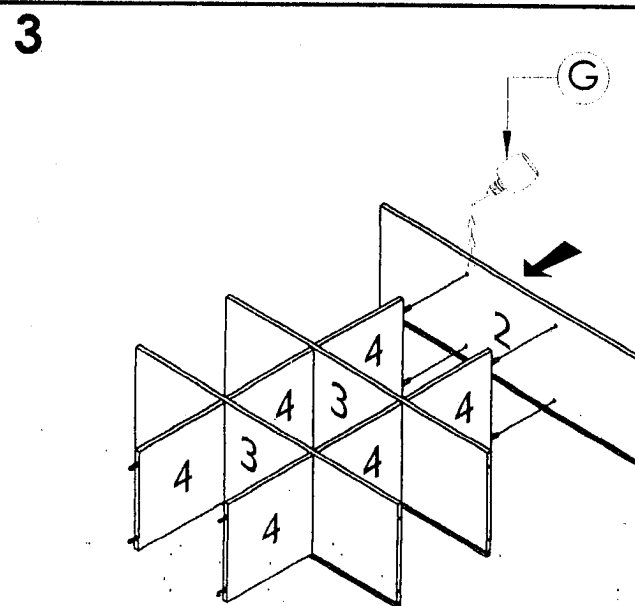
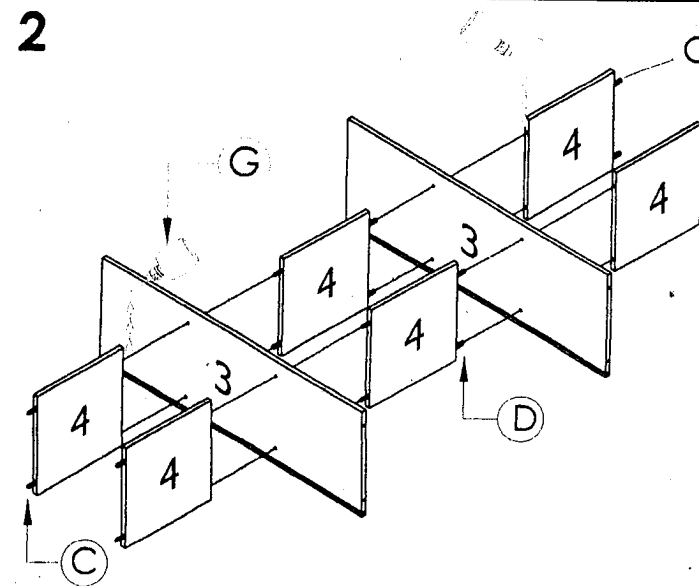
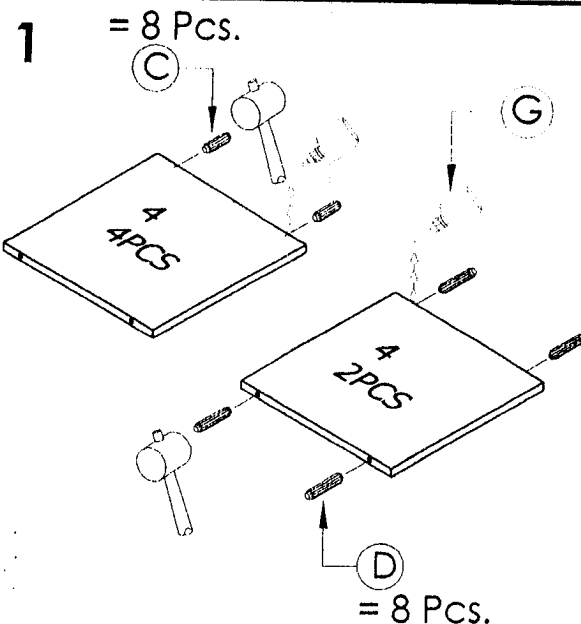
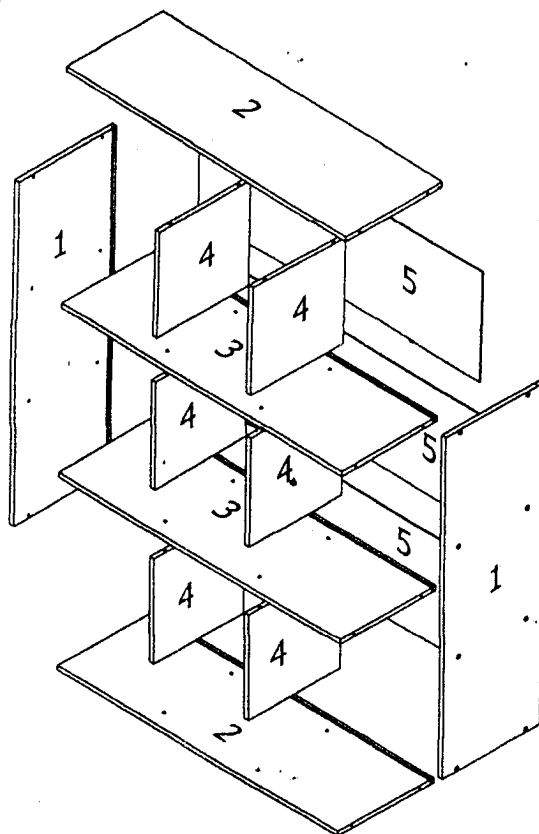


# ASSEMBLING GUIDE

**WARNING! NOT SUITABLE FOR CHILDREN UNDER 3 YEARS. CONTAINS SMALL PARTS.**

## CAUTION

MATERIAL USE - LAMINATED MEDIUM DENSITY FIBERBOARD AND PARTICLEBOARD FRAME \* TO USE SOFT, DRY, CLOTH \* DO NOT USE DETERGENT OR CHEMICAL \* AVOID CONTACT WITH WATER AND DIRECT SUNLIGHT \* TO BE ASSEMBLED ON A SOFT, DRY, CLEAN AND SMOOTH SURFACE. "DO NOT USE POWER DRILLS TO ASSEMBLE AS THIS MAY CAUSE DAMAGE TO THE PRODUCT IF OVER-TIGHTENED"



A		SCREW (M4.7 X 38)	16
B		CSK SCREW (M3.5 X 16mm)	6
C		WOOD DOWEL (Ø6 X 20mm)	8
D		WOOD DOWEL (Ø6 X 35mm)	8
E		PLASTIC HOLE PLUG (Ø12mm)	16
F		BACK PLY STOPPER	6
G		GLUE	1
H		STORAGE CUBE BAG (250(H)x250(W)x250(D)mm)	5

