

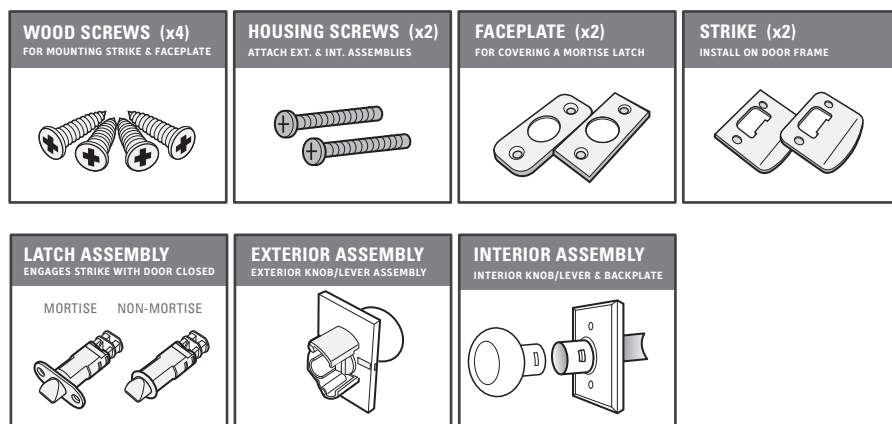
INSTRUCTIONS FOR INSTALLING YOUR WESLOCK PRODUCT

MOLTEN BRONZE COLLECTION :: PASSAGE 7300/7100 series

ELEGANCE COLLECTION :: PASSAGE 1700/2700/3700 series

WESLOCK
SINCE 1932

1 CONFIRM THAT ALL PARTS ARE ON HAND



2 REQUIRED TOOLS

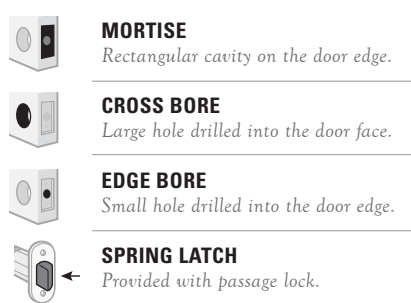


i CONTACT YOUR PRODUCT VENDOR WHEN ORDERING REPLACEMENT HARDWARE.

* DOOR PREP INSTRUCTIONS @ WESLOCK.COM

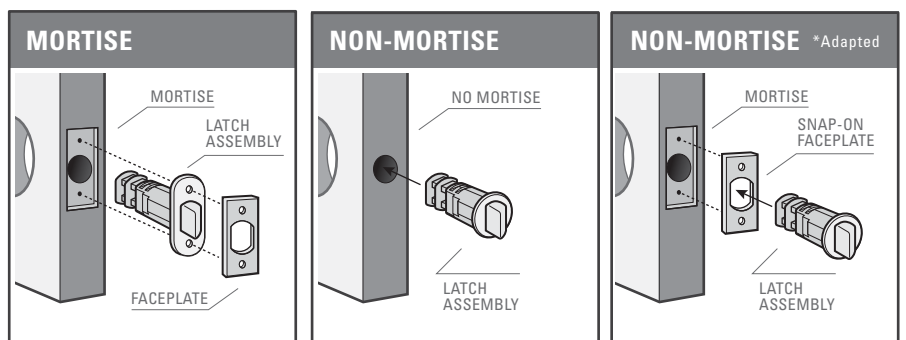
3 GLOSSARY OF TERMS

TECHNICAL LANGUAGE USED IN THIS DOCUMENT



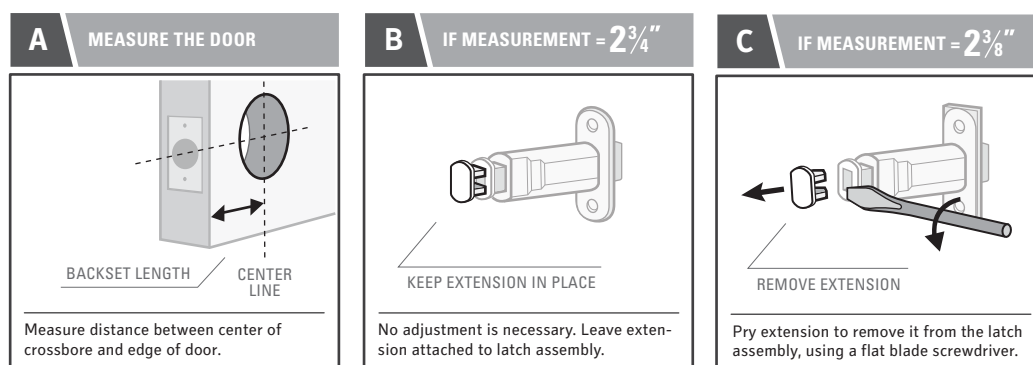
4 IDENTIFY YOUR LATCH TYPE

THIS WILL DETERMINE HOW YOU INSTALL THE LATCH ASSEMBLY

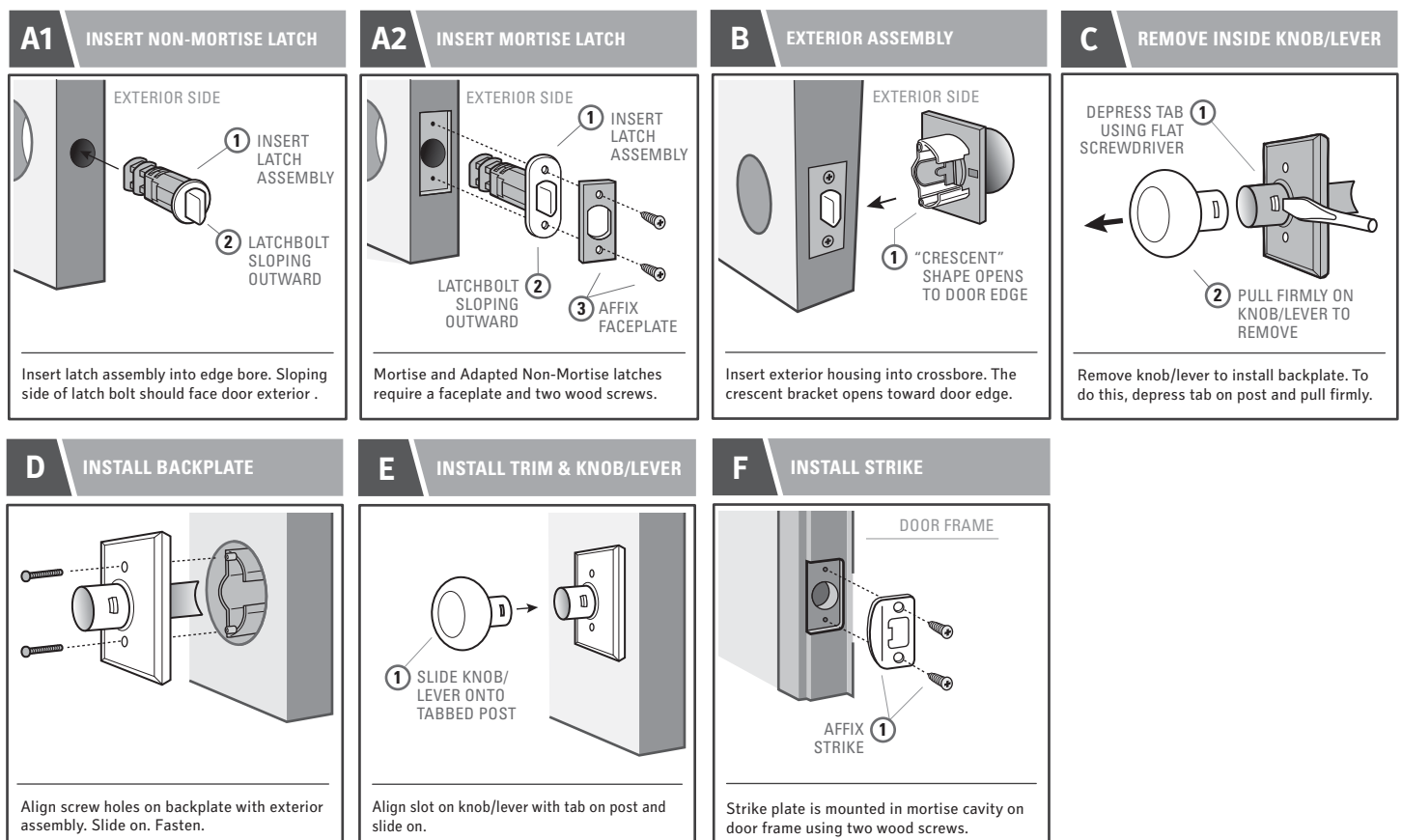


5 DETERMINE YOUR BACKSET

THE LENGTH OF YOUR LATCH ASSEMBLY WILL BE DETERMINED BY YOUR BACKSET MEASUREMENT.



6 INSTALL YOUR PASSAGE HARDWARE



“Thanks For Choosing Us. We Hope You Enjoy Your New Weslock Door Handle.”

WESLOCK WARRANTY INFORMATION

WESLOCK warrants to the purchaser that the products shall be free from defects in material workmanship for the LIFETIME of the product. Provided the product was purchased from an authorized WESLOCK dealer, Weslock's sole obligation under this warranty shall be to repair or replace product which WESLOCK determines to be defective. After such product is returned to WESLOCK by the purchaser with proof of purchase and with shipping charges prepaid, will this warranty be honored. Homeowner - if the product was installed as original equipment on a new home, you must provide the name of the builder, the date the home was built and your move-in date. If a mechanical defect has occurred, it is your right by this warranty to contact Customer Service in Tulsa, Oklahoma at (800) 575-2658 to arrange the return of the lock. This warranty DOES NOT cover products which malfunction due to improper installation or misuse. Please register your product at Weslock.com.

WARRANTY TERMS	FINISH	MECHANICAL
Elegance Collection	Limited Lifetime	Limited Lifetime
Molten Bronze Collection	Limited 10 Years	Limited Lifetime

ADDITIONAL CUSTOMER RESOURCES

Online

WEBSITE
For our full product catalog, and video instructions, go to;
www.weslock.com

TWITTER
To learn about promotions, and other news, follow us at;
twitter.com/Weslock1

Direct

YOUTUBE
Browse our video library, or leave us comments at;
youtube.com/WeslockDoorHardware

FACEBOOK
See what we're up to, or ask us a question at;
facebook.com/WeslockDoorHardware

PHONE NUMBER
1-800-575-2658
BOLT

FAX NUMBER
1-918-294-3869

EMAIL
warranty
@weslock.com